



# LARGE HOSE BRIDGE SYSTEMS

System features modular interlocking sections

## FEATURES

- Protect large lines up to 6.5" outside diameter
- High density polyurethane construction
- Single or multiple tunnel systems available
- Multiple sizes for various hose & cable diameters
- Reduces maintenance and replacement costs
- Modular interlocking design for easy setup

DIAMONDBACK® HOSE BRIDGE SYSTEMS provide protection for valuable cable and hose lines while ensuring a method of safe passage for vehicles. They replace wooden and metal fabricated ramps and can be used to protect lines up to 6.5 inches in diameter. High density, all-weather polyurethane construction protects from damage by physical pressure and reduces cable and hose maintenance and replacement costs. The lightweight, modular design of interlocking 16 inch wide sections provides multi-length flexibility. DIAMONDBACK® HOSE BRIDGE SYSTEMS are intended for temporary installations only.

### LOAD CAPACITY

MODEL	Max Load Per Tire
UHB2025	23,700 lb. (10,750 kg)
UHB3035	19,800 lb. (8,981 kg)
UHB4045	19,300 lb. (8,754 kg)
UHB5060	17,100 lb. (7,757 kg)

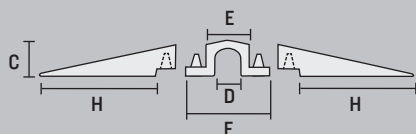
U.S. Patent No: 6,878,881

- Polyurethane construction is abrasion, impact and weather resistant with high load-bearing capacity
- Multiple tunnel sizes to accommodate fully charged hose lines and cables of various diameters
- Diamond-plate tread surface increases traction
- Yellow caution color for high visibility
- Modular interlocking design is lightweight, easy to transport, setup, disassemble, and store
- Built-in hand holds allow for handling with ease and double as attachment points for mounting brackets

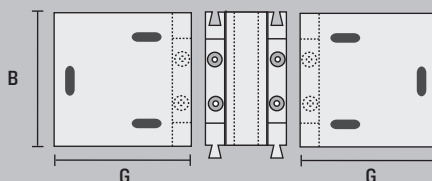
**WARNING:** Vehicles crossing bridge system must have clearance of greater than bridge height.

**WARNING:** Hose Bridges are for rubber tired vehicles only (not for equipment with metal tracks)

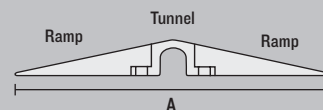
End View: Unassembled Components



Top View: Unassembled Components



Top View: Assembled



Each Single Tunnel Modular Bridge System consists of 1 Tunnel and 2 Ramps

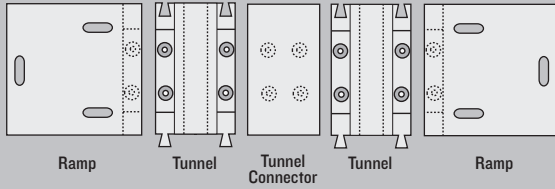


	MODEL	DESCRIPTION	A: BRIDGE LENGTH	B: BRIDGE WIDTH	C: BRIDGE HEIGHT	D: TUNNEL DIAMETER	E: TUNNEL TOP LENGTH	F: TUNNEL BASE LENGTH	G: RAMP TOP LENGTH	H: RAMP BASE LENGTH	SYSTEM WEIGHT
3" TUNNEL	UHB2025	Bridge for up to 3 in. lines	34.75 in. (88.7 cm)	16 in. (40.6 cm)	3.88 in. (9.9 cm)	3 in. (7.62 cm)	5.38 in. (13.9 cm)	13.25 in. (33.8 cm)	14.75 in. (37.7 cm)	10.75 in. (27.5 cm)	32 lb. (14.5 kg)
3.5" TUNNEL	UHB3035	Bridge for up to 3.5 in. lines	38.25 in. (97.6 cm)	16 in. (40.6 cm)	4.63 in. (11.8 cm)	3.5 in. (8.89 cm)	6.5 in. (16.6 cm)	14.38 in. (36.7 cm)	16 in. (40.8 cm)	12 in. (30.6 cm)	40 lb. (18.1 kg)
4.5" TUNNEL	UHB4045	Bridge for up to 4.5 in. lines	44 in. (111.8 cm)	16 in. (40.6 cm)	5.5 in. (14.1 cm)	4.5 in. (11.43 cm)	7.75 in. (19.8 cm)	15.63 in. (39.9 cm)	18.25 in. (46.6 cm)	14.25 in. (36.4 cm)	50 lb. (22.7 kg)
6.5" TUNNEL	UHB5060	Bridge for up to 6.5 in. lines	60 in. (153.0 cm)	16 in. (40.6 cm)	8.13 in. (20.8 cm)	7 in. (17.9 cm)	9.13 in. (23.3 cm)	18.25 in. (46.6 cm)	25.5 in. (65.1 cm)	20.88 in. (53.3 cm)	92 lb. (41.7 kg)

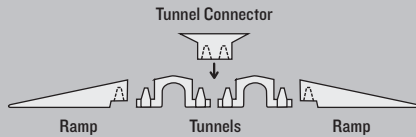
## CUSTOM BRIDGE SYSTEMS

DIAMONDBACK® HOSE BRIDGE SYSTEMS can be customized to any number of tunnels or length. Building a custom system is as easy as ordering tunnels connectors and the individual components separately.

Top View: Two-Tunnel Bridge System



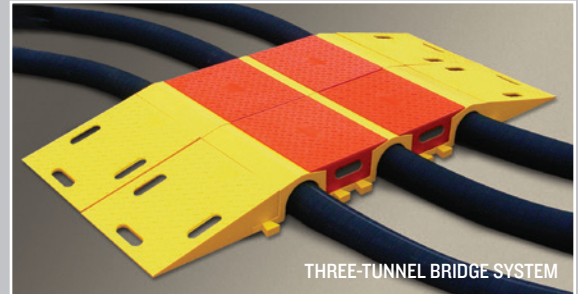
End View: Two-Tunnel Bridge System



End View: Completed Two-Tunnel Bridge System



End View: Three-Tunnel Bridge System



### LOAD CAPACITY

MODEL	Max Load Per Tire
UHB2025	23,700 lb. (10,750 kg)
UHB3035	19,800 lb. (8,981 kg)
UHB4045	19,300 lb. (8,754 kg)
UHB5060	17,100 lb. (7,757 kg)

U.S. Patent No: 6,878,881

## CREATE A CUSTOM BRIDGE SYSTEM

### 3" TUNNEL OPTIONS

	MODEL	DESCRIPTION	WEIGHT	END VIEW
TUNNEL	UHB2025T (Each)	Tunnel only, for up to 3 in. lines	15 lb. (6.8 kg)	
RAMPS	UHB2025R (Pair)	Ramps only, for UHB2025 Tunnel	18 lb. (8.2 kg)	
TUNNEL CONNECTOR	UHB2025TC (Each)	Tunnel Connector only, for UHB2025T Tunnel	11 lb. (5 kg)	

### 3.5" TUNNEL OPTIONS

	MODEL	DESCRIPTION	WEIGHT	END VIEW
TUNNEL	UHB3035T (Each)	Tunnel only, for up to 3.5 in. lines	17 lb. (7.7 kg)	
RAMPS	UHB3035R (Pair)	Ramps only, for UHB3035 Tunnel	22 lb. (10 kg)	
TUNNEL CONNECTOR	UHB3035TC (Each)	Tunnel Connector only, for UHB3035T Tunnel	16 lb. (7.3 kg)	

### 4.5" TUNNEL OPTIONS

	MODEL	DESCRIPTION	WEIGHT	END VIEW
TUNNEL	UHB4045T (Each)	Tunnel only, for up to 4.5 in. lines	21 lb. (9.5 kg)	
RAMPS	UHB4045R (Pair)	Ramps only, for UHB4045 Tunnel	30 lb. (13.6 kg)	
TUNNEL CONNECTOR	UHB4045TC (Each)	Tunnel Connector only, for UHB4045T Tunnel	21 lb. (9.5 kg)	

### 6.5" TUNNEL OPTIONS

	MODEL	DESCRIPTION	WEIGHT	END VIEW
TUNNEL	UHB5060T (Each)	Tunnel only, for up to 6.5 in. lines	32 lb. (6.8 kg)	
RAMPS	UHB5060R (Pair)	Ramps only, for UHB5060 Tunnel	58 lb. (26.3 kg)	
TUNNEL CONNECTOR	UHB5060TC (Each)	Tunnel Connector only, for UHB5060T Tunnel	26 lb. (11.8 kg)	